

HEATING, COOLING & VENTILATION

Heating, ventilation, and air conditioning (HVAC) systems account for about 40% of the electricity used in commercial buildings.

Heating and Cooling Equipment

Rebates per ton of system cooling capacity

Type of System	1st 40 Tons	Remaining	Maximum
Geothermal Closed Loop System	\$500	\$175	\$25,000
Geothermal Open Loop System	\$300	\$100	\$25,000
Geothermal Water Source System	\$200	\$75	\$15,000
Geothermal Unit Only with Existing Loop	\$75	\$75	\$10,000
ENERGY STAR Air-Source Heat Pump System	\$250	\$100	\$15,000
Standard Air-Source Heat Pump System	\$200	\$50	\$10,000
Central Air Conditioning System	\$25	\$25	\$5,000
Air Cooled Chiller	\$20	\$20	\$5,000
Water Cooled Chiller	\$30	\$30	Total Max.

Contact your cooperative for equipment requirement standards.

Chiller Pipe Insulation \$2/linear ft.

Heat Recovery Ventilators \$180/ton
(cooling tons recovered from exhaust air)

Heat recovery ventilation systems improve the efficiency of heating and cooling systems and improve indoor air quality.

Custom Rebates

Members who implement strategies that reduce electrical usage may qualify for the energy savings from equipment or measures that are not included as part of a prescriptive rebate program. To be eligible for custom rebates, you should request pre-approval and engage Maquoketa Valley Electric in the early planning stages of your project.



FOR MORE INFORMATION VISIT

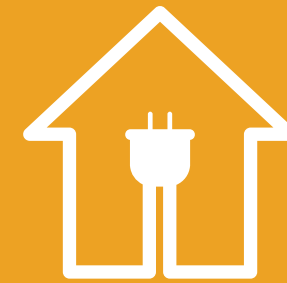
ENERGY STAR®
energystar.gov

AHRI

Air Conditioning, Heating, and Refrigeration Institute
ahridirectory.org

Contact your cooperative for a complete list of rebate programs and qualifications.

All programs subject to change at any time, without prior notice.



SAVINGS
WITH
**STAYING
POWER**



2026 COMMERCIAL REBATES



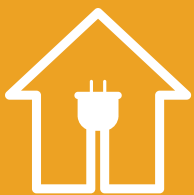
mvec.coop

109 N. Huber
Anamosa, IA 52205
(800) 927-6068



This institution is an equal opportunity provider and employer.

01/2026



2026 MAQUOKETA VALLEY ELECTRIC COOPERATIVE REBATES

Contact the cooperative for the complete list of rebates and qualifications

ADJUSTABLE SPEED DRIVES

Adjustable speed drive equipment is used to control the speed of machinery and can be used to increase efficiency of HVAC fans and pumping equipment. Applies to new purchases only. Not for backup systems or replacements.

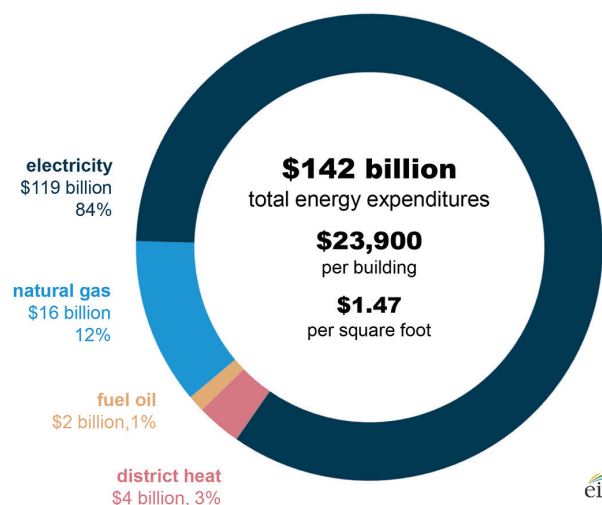
Load	Run Hours	Horsepower Controlled
Variable	≥ 1000	\$40
Fixed	≥ 1000	\$15

Up to a maximum of \$10,000 per facility.

*Variable loads – fans or pumps

*Fixed loads – all other types that have a constant torque

U.S. Commercial Energy Expenditures by Major Fuels



Billion dollars and share of total

Source: U.S. Energy Information Administration, Commercial Buildings Energy Consumption Survey, 2018

COMMERCIAL KITCHEN

Compared to standard models, ENERGY STAR labeled commercial appliances can lead to energy savings of as much as 35% with a 1.3 year payback.

Rebates for ENERGY STAR Commercial Refrigeration				
Size	Solid Door Refrigerators	Glass Door Refrigerators	Solid Door Freezers	Glass Door Freezers
<19 cu.ft.	\$25/each	\$40/each	\$40/each	\$125/each
19-30 cu. ft.	\$40/each	\$50/each	\$60/each	\$150/each
31-60 cu. ft.	\$60/each	\$60/each	\$150/each	\$300/each
61-90 cu.ft	\$100/each	\$70/each	\$325/each	\$600/each

Maximum rebate of \$5,000 per facility per year.

ENERGY STAR Dishwasher

(varies depending on type, requires electric water heater)

- Under Counter \$100/each
- Stationary Single Tank Door \$250/each
- Single Tank Conveyor \$250/each
- Pot/Pan and Utensil \$250/each
- Multi Tank Conveyor \$800/each

ENERGY STAR Cooking Equipment

ENERGY STAR Electric Steam Cooker \$750/each
3-7 pans

ELECTRIC VEHICLE PROGRAM



Rebates are available for commercial electric vehicle chargers and electric vehicles. Up to five of each.

- Level II Charger 50% of installed cost, up to \$500/each
- Electric Vehicle/Plug-in Hybrids \$250/each

For more information, contact the cooperative.

ELECTRIC FORKLIFTS

Rebates are available for electric forklifts and hand trucks when converting from gas units, expanding fleet, or initial purchase/lease. Electric forklifts have a number of benefits related to maintenance, health and safety.

- Class I & II Forklifts Up to \$1,000/each
- Class III Hand Truck Up to \$350/each

For more information, contact the cooperative.